

CHANGES: New procedures at this airport (SIDs transferred).

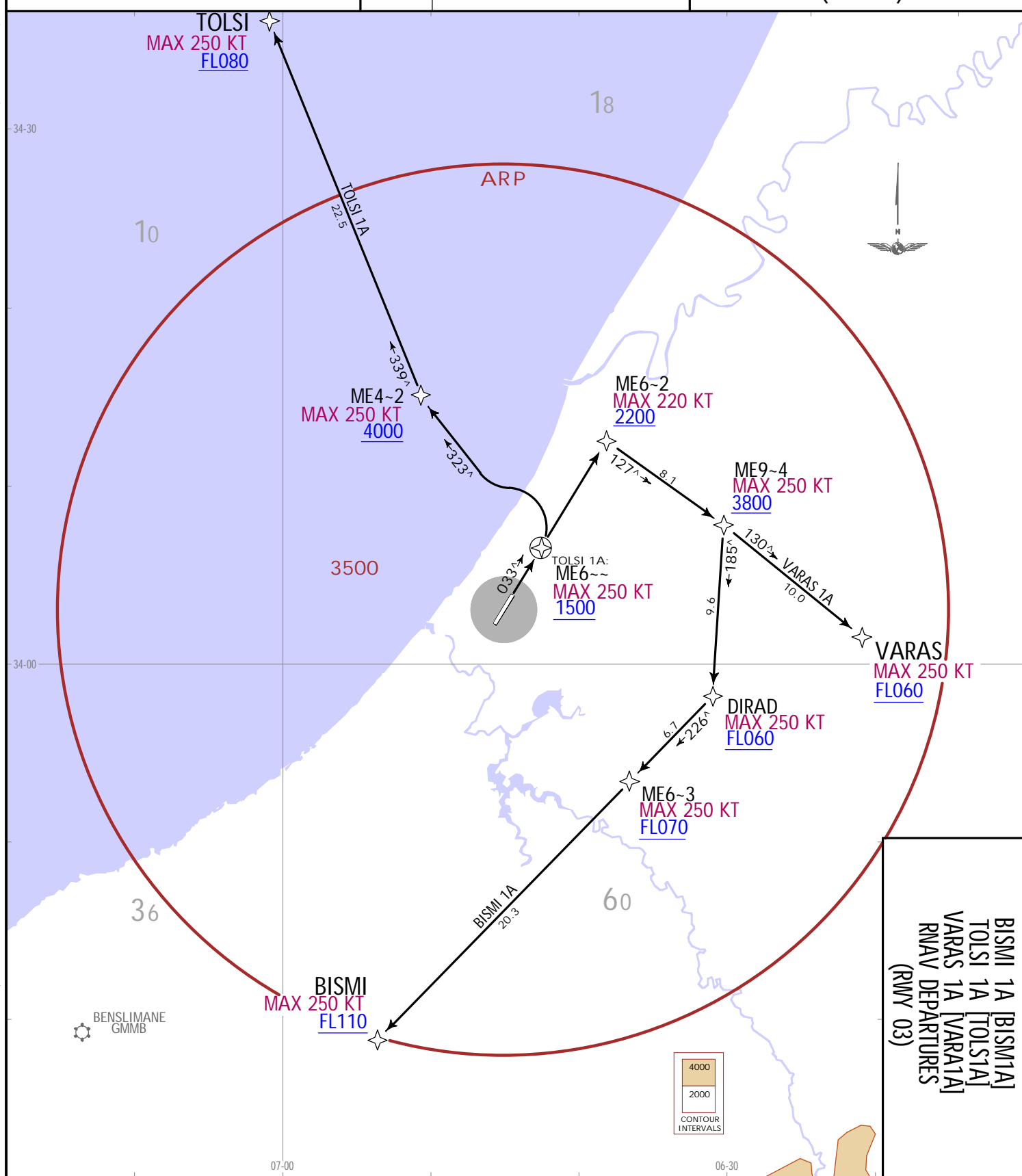
GMME/RBA
SALE INTL

These SIDs require a minimum climb gradient of 7.0%.

Gnd speed-KT	75	100	150	200	250	300
7.0% V/V (fpm)	532	709	1063	1418	1772	2127

SID	ROUTING
BISMI 1A	ME6~2 (K220~; 2200+) - ME9~4 (K250~; 3800+) - DIRAD (K250~; FL060+) - ME6~3 (K250~; FL070+) - BISMI (K250~; FL110+).
TOLSI 1A	ME6~- (K250~; 1500+) - ME4~2 (K250~; 4000+) - TOLSI (K250~; FL080+).
VARAS 1A	ME6~2 (K220~; 2200+) - ME9~4 (K250~; 3800+) - VARAS (K250~; FL060+).

Apt Elev 272	Trans alt: 4000 RNP 1 required.
BISMI 1A [BISM1A] TOLSI 1A [TOLS1A] VARAS 1A [VARA1A] RNAV DEPARTURES (RWY 03)	

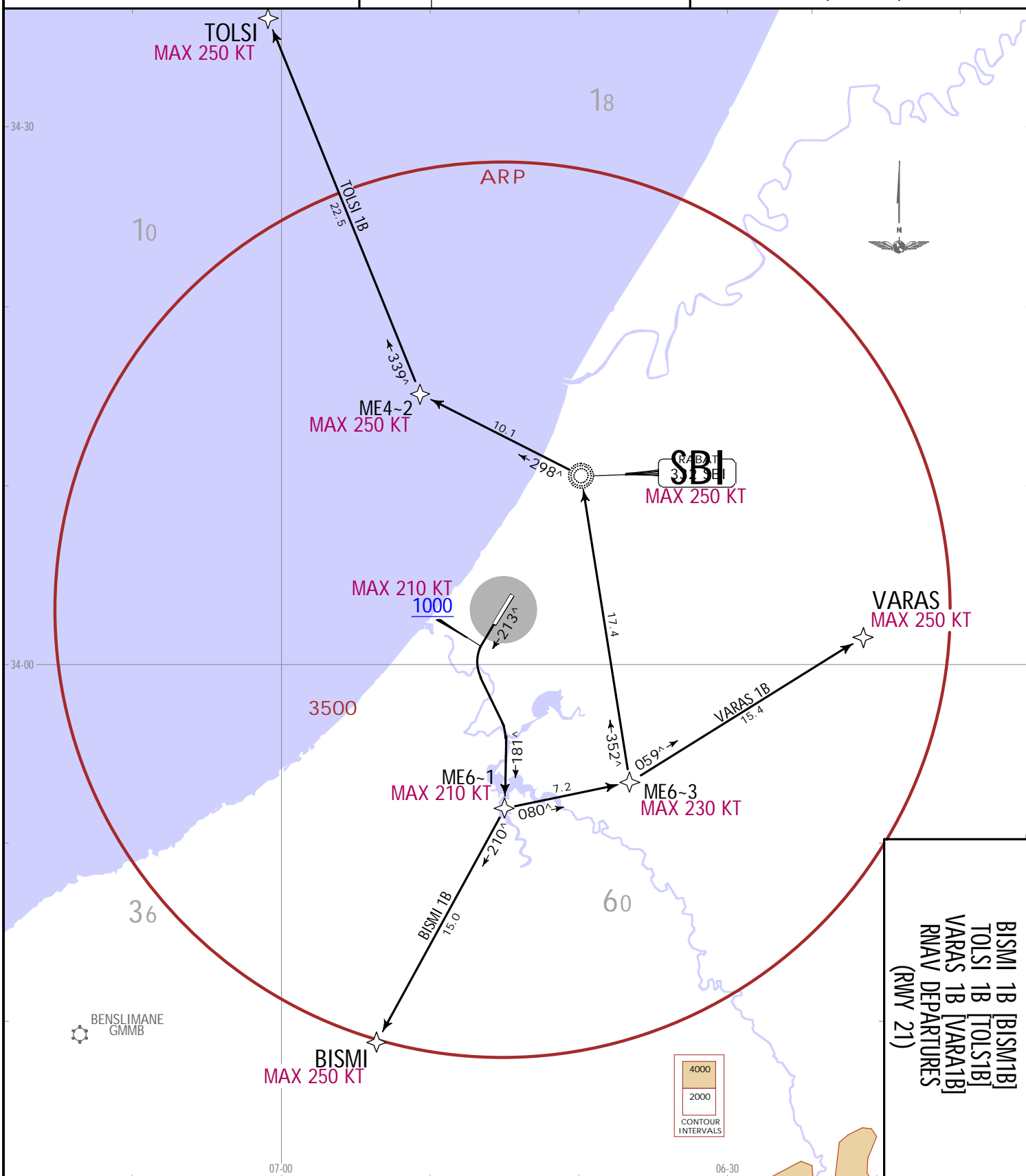


JEPPESSEN RABAT, MOROCCO
1 SEP 23 (10-3) Eff. 7.Sep. RNAV.SID.

Gnd speed-KT	75	100	150	200	250	300
7.0% V/V (fpm)	532	709	1063	1418	1772	2127

Trans alt: 4000
RNP 1 required.

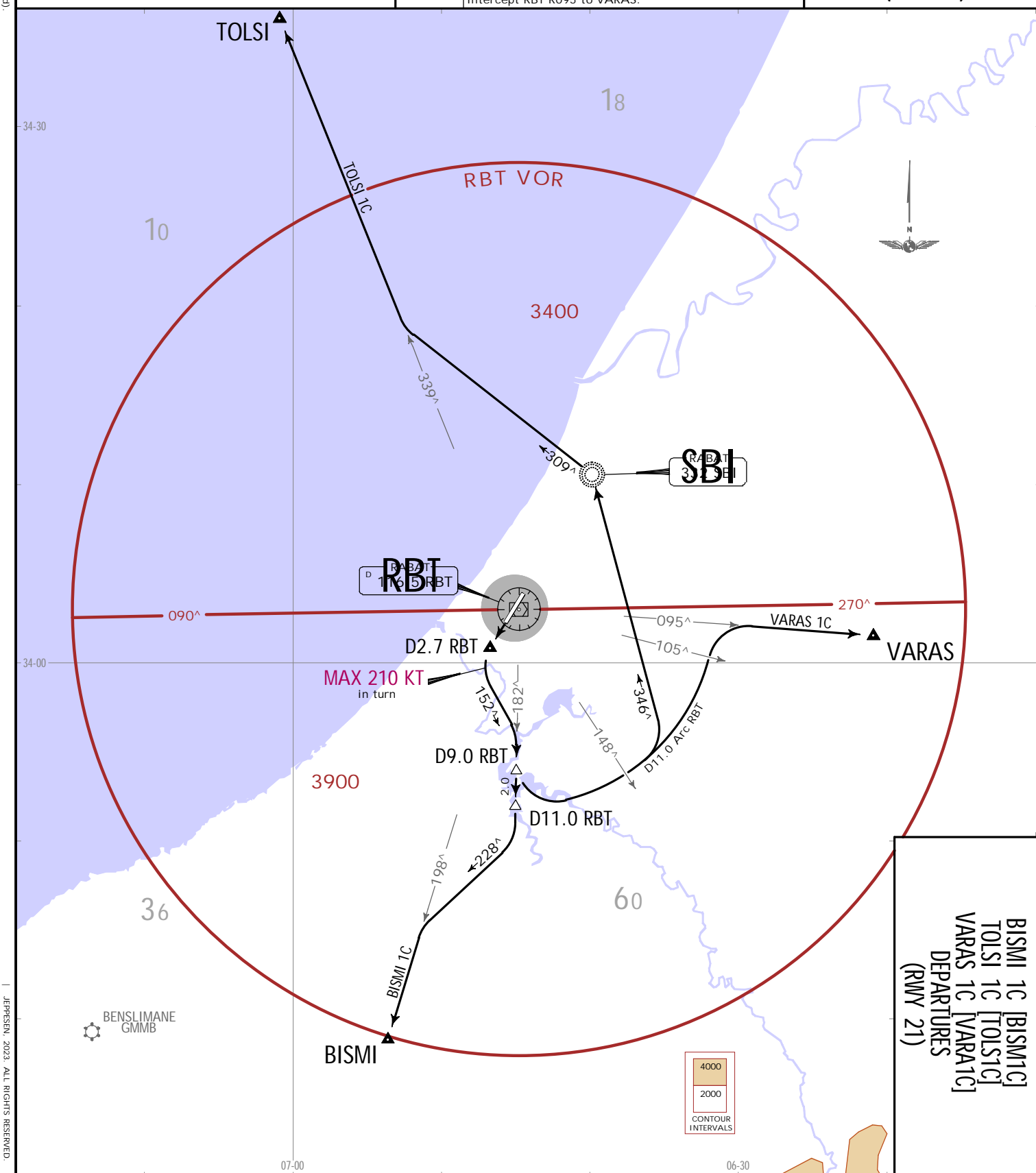
BISMI 1B [BISM1B]
TOLSI 1B [TOLS1B]
VARAS 1B [VARA1B]
RNAV DEPARTURES
(RWY 21)



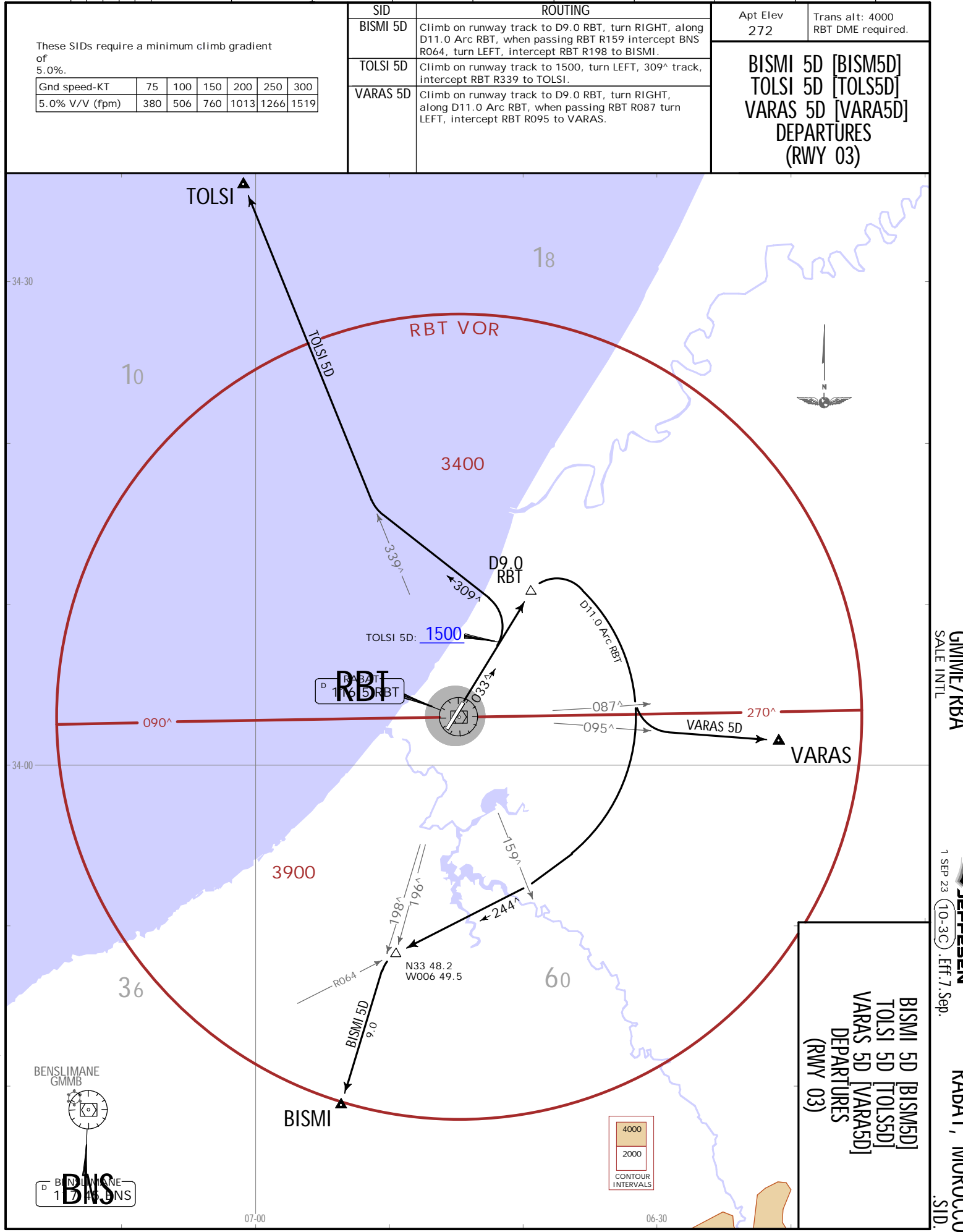
Gnd speed-KT	75	100	150	200	250	300
7.0% V/V (fpm)	532	709	1063	1418	1772	2127

Apt Elev 272	Trans alt: 4000 RBT DME required.
-----------------	--------------------------------------

BISMI 1C [BISM1C]
TOLSI 1C [TOLS1C]
VARAS 1C [VARA1C]
DEPARTURES
(RWY 21)



JEPPIESSEN RABAT, MOROCCO
1 SEP 23 (10-3B). Eff. 7.Sep.
SID.



GMME/RBA
SALE INTL

JEPPESSEN
1 SEP 23 (10-3C) .EFF.7.Sep.

RABAT, MOROCCO
.SID.